



CTS Turbo MQB Direct-fit intercooler (MK7 GTI/Golf R specific)

2016 VW Golf R shown

Part number: CTS-20T-MQB-DF

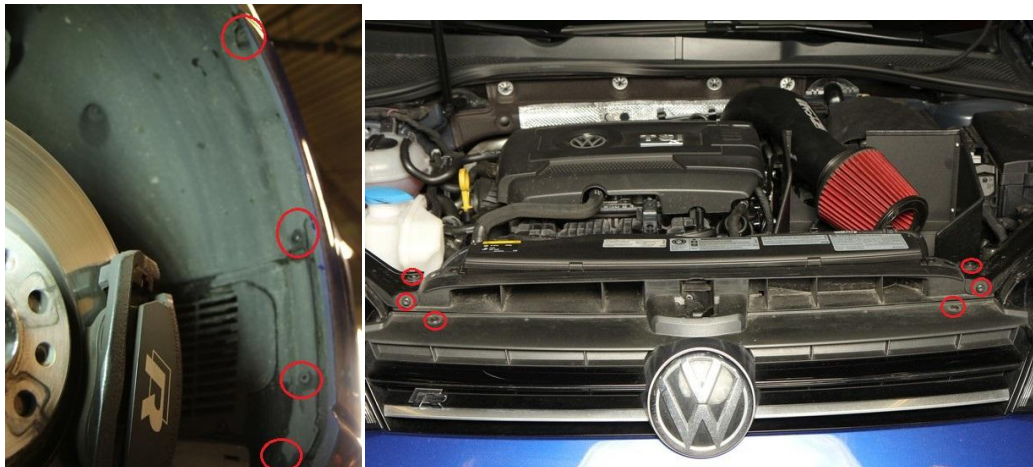
NOTE: We do not accept any liability for incorrect installation or damage during the install.

Have the following tools at hand; listed are recommended tools:

- Full socket set
- T25, T30, T45 torx
- Dremel tool with cut-off wheel or attachment
- Phillips and flat screwdriver, pliers, etc

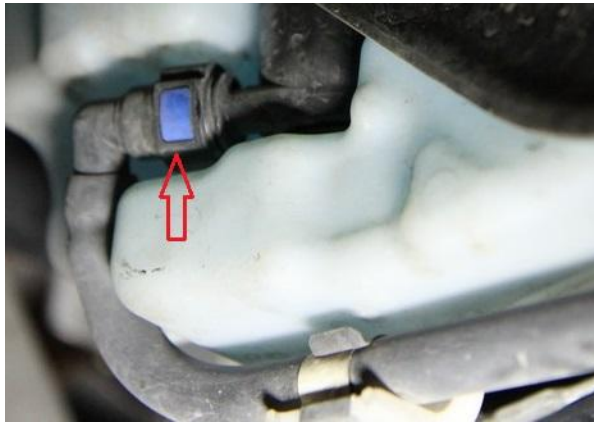
Make sure the car is cooled off before starting the install. Never work on a hot motor.

Step 1: Safely lift and secure vehicle on hoist or jack stands. Remove front wheels. Remove from wheel liners: T25 torx. Remove belly pan: T25 or T45 torx. Remove bolts under wheel liner holding the front bumper on. Remove grille and headlights.



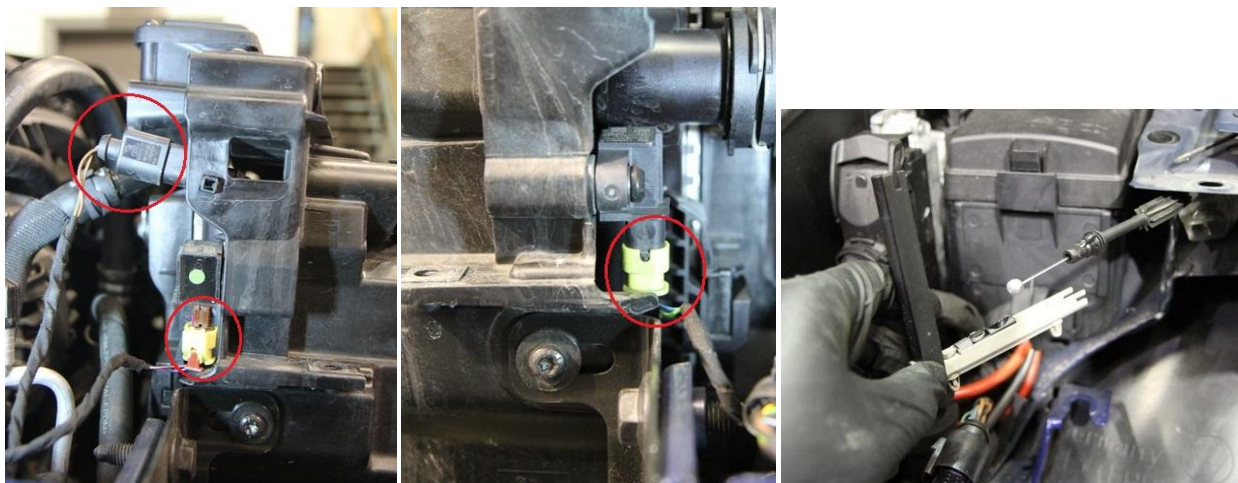


Step 2: Remove headlight washer line (squeeze the blue tabs), drain washer fluid and unclip the hose. Remove the hose from the retaining clips along the top of bumper.



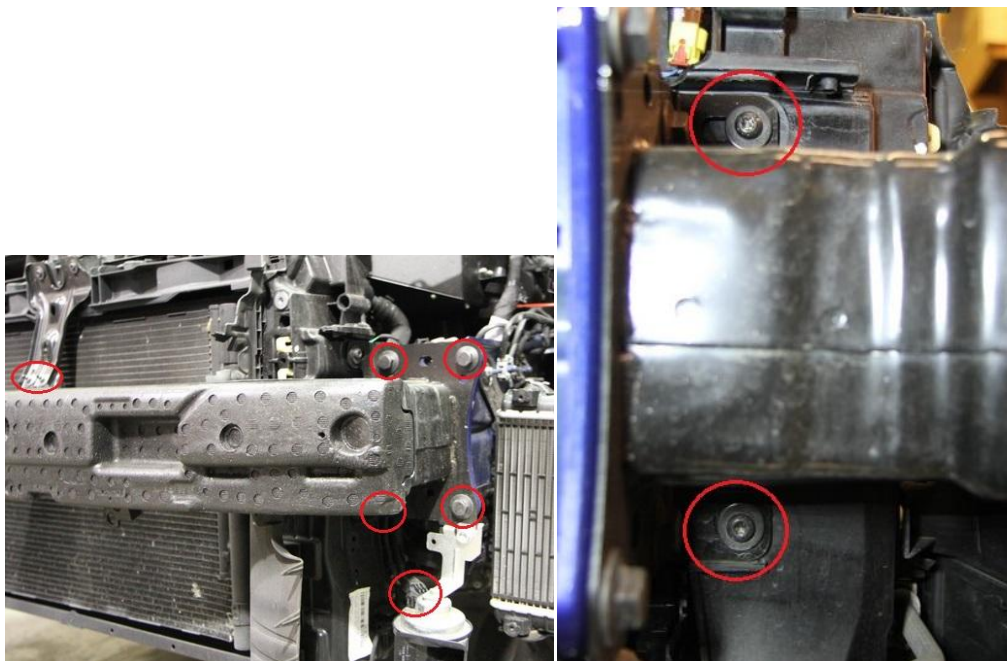
Step 3: Pull firmly at the bumper starting on wheel/fender side then carefully slide bumper forward. Unclip electrical harnesses as required.

Step 4: Remove connectors on each side, disconnect the hood release and remove stock intercooler hoses.

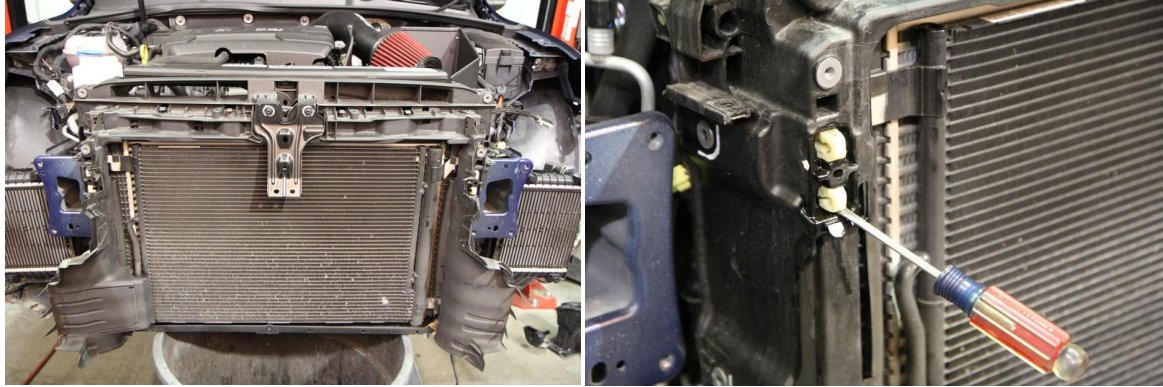




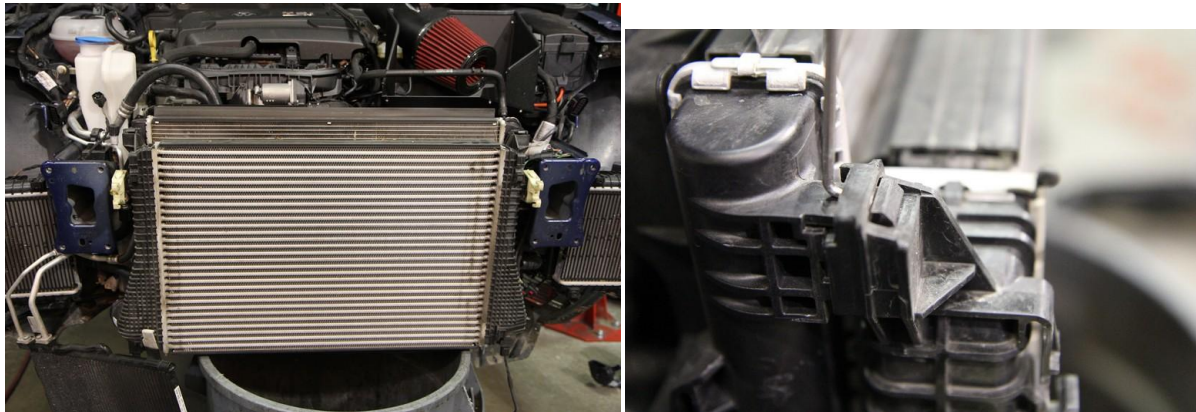
Step 5: Mark the position of the bolts on the crash bar and radiator support. Before removing the bolts, make sure something is holding up the rad assembly. Disconnect the horns. Remove 2x 10mm bolts at the middle, 8x 16mm hex and 4x T30 torx bolts. Remove crash bar.



Step 6: Remove plastic air deflectors and unclip the factory snap-connectors for the intercooler. Use grease or WD40 to help with removal.

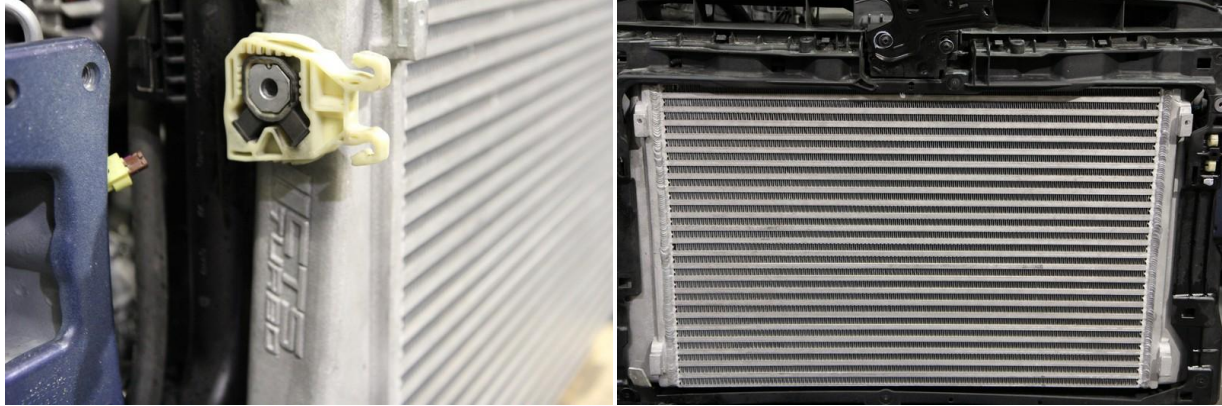


Step 7: Remove the radiator support and a/c condenser. Unclip the factory FMIC from the radiator and remove.



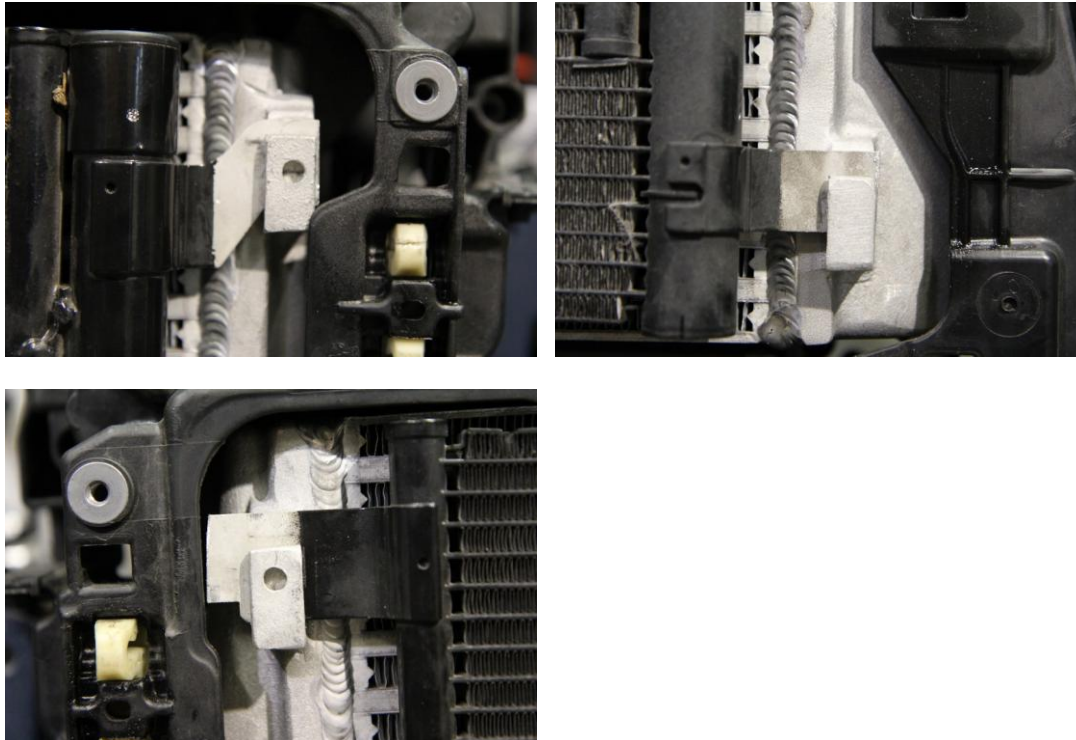
Step 8:

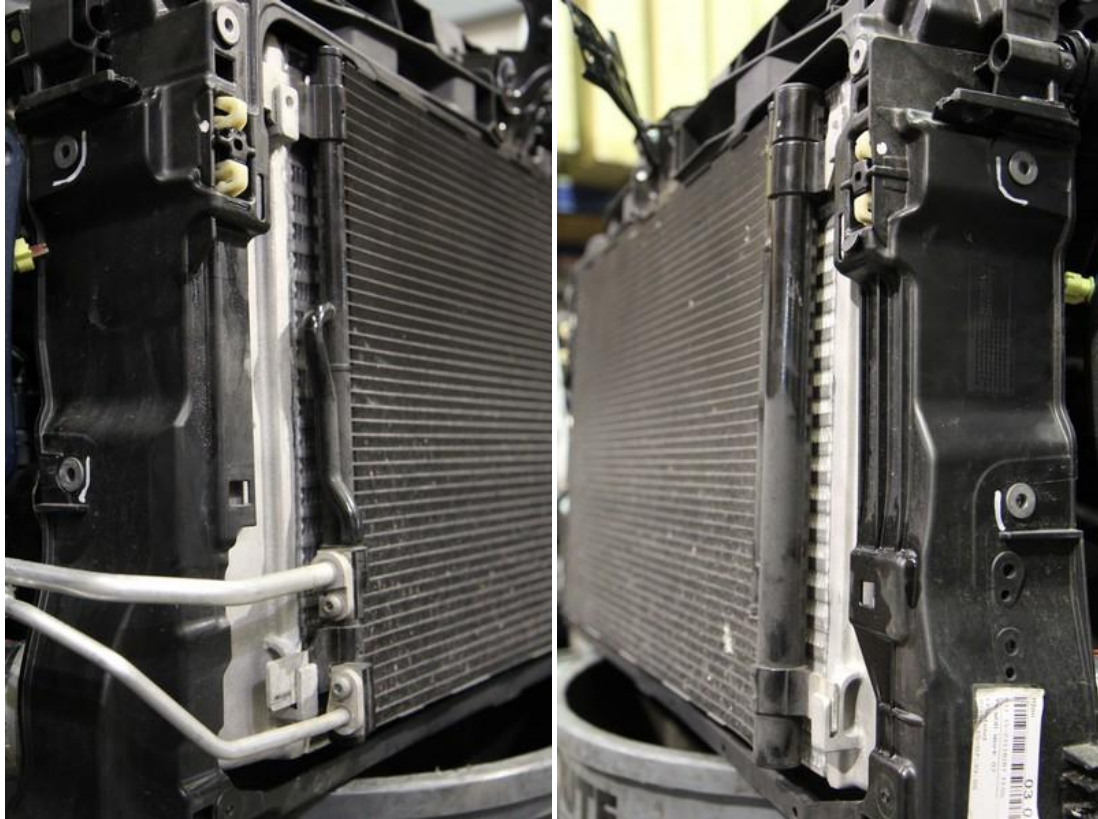
Transfer white plastic clips to the CTS FMIC, clip into radiator and install radiator support in factory location.



Step 9:

Using a cut-off disc on Dremel, trim the a/c condenser tabs in order to clear the radiator support by approx 1/4"-1/2" and reinstall a/c condenser.





Step 10: Trim the plastic air deflectors where needed and re-install. Re-install crash bar and secure the radiator support. Install CTS FMIC hoses. Continue re-assembly by reversing the steps.

